

**應用 APPLICATIONS**

礦業與礦物加工業、水與汙水處理、化工廠、蒸氣及高溫流體、汽車工業、一般流體。  
Mining & Mineral Processing, Water & Waste Water, Chemical Plant, Steam & High Temperature Fluid, Automotive Industry, General Fluid.

**技術資料 TECHNICAL DATA**

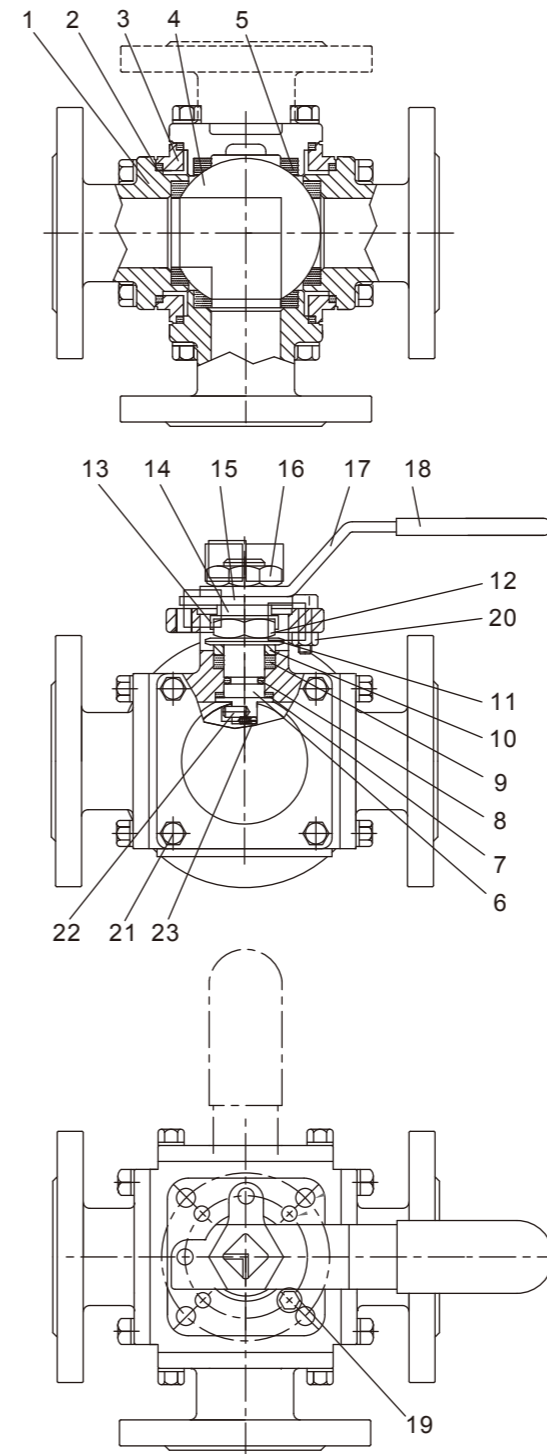
|                         |  |
|-------------------------|--|
| 設計<br>Design            | B16.34, EN-12516-1   |
| 尺寸<br>Size              | 1/4" ~ 8" (DN8 ~ DN200)  |
| 壓力等級<br>Pressure Rating | 1000 WOG, Class 150, Class 300, PN16   |
| 端口<br>End Connections   | 牙口端、套焊端、對焊端、法蘭端<br>Threaded End, Socket Weld End, Butt Weld End, Flanged End |
| 產品檢測<br>Testing         | API 598, EN12266-1   |
| 流量<br>Bore              | 減流量、全流量<br>Reduced Bore, Full Bore   |
| 認證<br>Certificate       | <b>ATEX</b>  |

**特點 FEATURES**

- 以具有競爭力的價格提供卓越的閥門設計。
  - 可使用於執行器的 ISO 平台架。
  - RPTFE密封消除了對產品污染的擔憂。
  - 較低的操作扭力，便於操作並降低執行器成本。
  - 明確的開關位置指示。
  - 防爆軸心。
  - 可使用附鎖裝置。
  - 防靜電裝置，可應要求提供。
  - 根據 ISO 9001 認證的質量體系製造。
  - CE 標示符合 PED 2014/68/EU, 可應要求提供。
  - 多種球座材質可供選擇。
- 除了標準的球座材質，球座有以下材質可供選擇。每個球座選項將滿足廣泛的性能，適用於許多應用。
- PTFE + 15% Glass Fiber
  - PTFE + 25% Carbon Fiber
  - Modified PTFE
  - Modified PTFE + 25% Carbon Fiber
  - PTFE + 50% SS
  - PEEK
- \* 請參考溫壓圖
- Superior valve design at a competitive price.
  - ISO actuator mounting pad.
  - RPTFE seal relieves concern over product contamination.
  - Lower operating torque for ease of operation and reduced actuator cost.
  - Positive position indication.
  - Blowout-proof shaft.
  - Locking device is available.
  - Anti-static device, on request.
  - Manufactured under ISO 9001 certified quality system.
  - CE marking according to PED 2014/68/EU. Available on request.
  - Various seat material are available.
- In addition to standard seat material, following variety is available. Each material option will meet a wide range of performance, suitable for many applications.
- PTFE + 15% Glass Fiber
  - PTFE + 25% Carbon Fiber
  - Modified PTFE
  - Modified PTFE + 25% Carbon Fiber
  - PTFE + 50% SS
  - PEEK
- \* Please refer to the Pressure-Temperature rating.

**物料表 MATERIAL COMPOSITION**

**型號 Fig. No. : A3W-FE / A4W-FE (1/2"~2")**

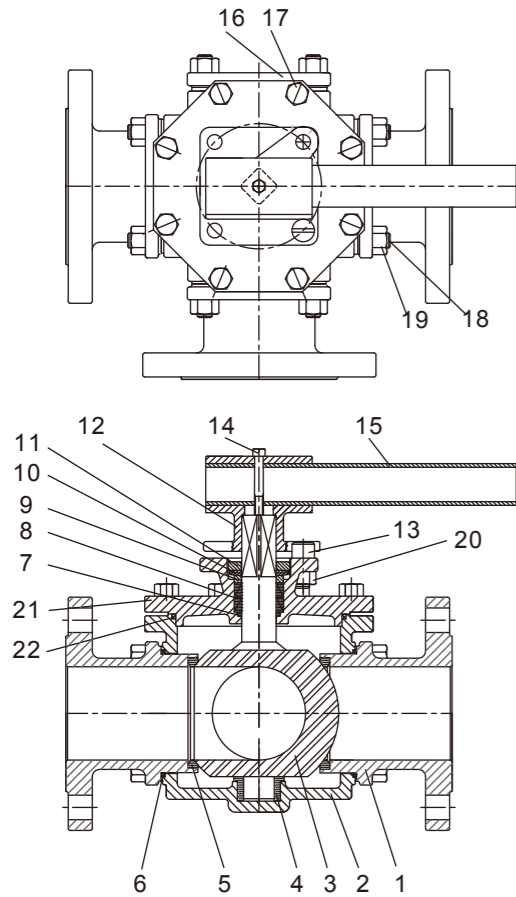


| ITEM | PART NAME          | STAINLESS STEEL | CARBON STEEL |
|------|--------------------|-----------------|--------------|
| 1    | Flange End         | CF8M            | WCB          |
| 2    | Gasket             | PTFE            | PTFE         |
| 3    | Body               | CF8M            | WCB          |
| 4    | Ball               | CF8M            | CF8M         |
| 5    | Seat               | PTFE            | PTFE         |
| 6    | Stem               | SS 316          | SS 316       |
| 7    | Thrust Washer      | RPTFE           | RPTFE        |
| 8    | O-ring             | Viton           | Viton        |
| 9    | Stem Packing       | Graphite        | Graphite     |
| 10   | Gland              | SS 304          | SS 304       |
| 11   | Belleville Washer  | SS301           | SS301        |
| 12   | Stem Nut           | SS 304          | SS 304       |
| 13   | Nut Stop           | SS 304          | SS 301       |
| 14   | Space Washer       | SS 304          | SS 304       |
| 15   | Plater             | SS 304          | SS 304       |
| 16   | Handle Nut         | SS 304          | SS 304       |
| 17   | Handle             | SS 304          | SS 304       |
| 18   | Cover              | Plastisol       | Plastisol    |
| 19   | Stop Pin           | SS 304          | SS 304       |
| 20   | Stop Pin Nut       | SS 304          | SS 304       |
| 21   | Flange End Bolts   | B8              | B8           |
| 22   | Pin                | SS 316          | SS 316       |
| 23   | Anti-Static Device | SS 316          | SS 316       |

\* 我方有權隨時變更材質/設計/規格，以便提供品質優良的產品。  
We reserve the right to modify the design / specification without previous notice for better quality.

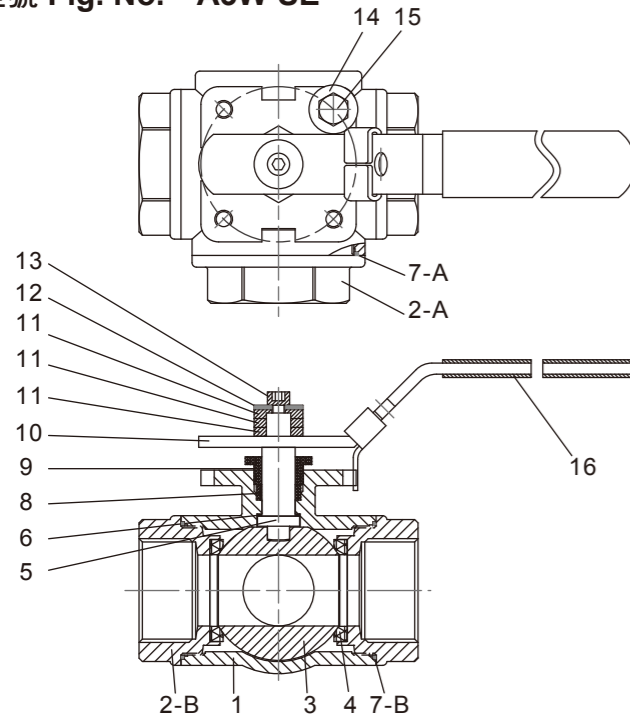
物料表 MATERIAL COMPOSITION

型號 Fig. No. : A3W-FE / A4W-FE (2-1/2"~4")



| ITEM | PART NAME         | STAINLESS STEEL | CARBON STEEL   |
|------|-------------------|-----------------|----------------|
| 1    | Flanged End       | CF8M            | WCB            |
| 2    | Body              | CF8M            | WCB            |
| 3    | Ball & Stem       | CF8M            | CF8M           |
| 4    | Housing           | PTFE+Stainless  | PTFE+Stainless |
| 5    | Seats             | PTFE/RPTFE      | PTFE/RPTFE     |
| 6    | Gasket            | PTFE            | PTFE           |
| 7    | O-ring            | Viton           | Viton          |
| 8    | Stem Packing      | PTFE            | PTFE           |
| 9    | Gland Washer      | SS 304          | SS 304         |
| 10   | Belleville Washer | SS 301          | SS 301         |
| 11   | Gland             | SS 304          | SS 304         |
| 12   | Handle Head       | CF8             | CF8            |
| 13   | Stop Pin          | SS 304          | SS 304         |
| 14   | Bolt              | SS 304          | SS 304         |
| 15   | Lever             | Carbon Steel    | Carbon Steel   |
| 16   | Blank end         | CF8M            | WCB            |
| 17   | Bonnet bolts      | SS 304          | SS 304         |
| 18   | End cap bolts     | SS 304          | SS 304         |
| 19   | Bolt Nuts         | SS 304          | SS 304         |
| 20   | Stop Pin Nut      | SS 304          | SS 304         |
| 21   | Bonnet            | CF8M            | WCB            |
| 22   | Bonnet Gasket     | PTFE            | PTFE           |

型號 Fig. No. : A3W-SE



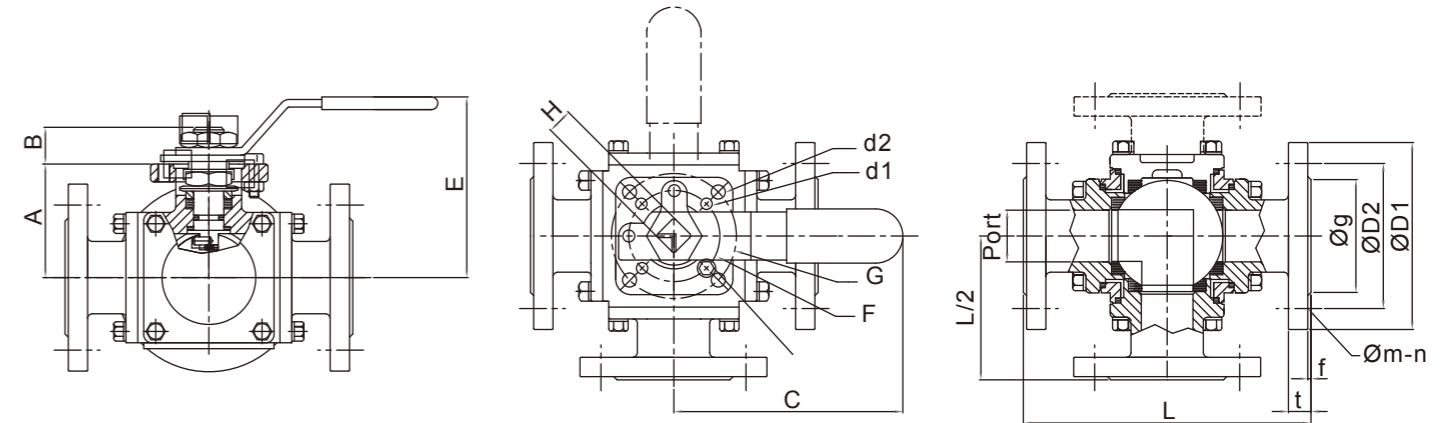
| ITEM | PART NAME     | MATERIAL   |
|------|---------------|------------|
| 1    | Body          | CF8M       |
| 2-A  | Cap           | CF8M       |
| 2-B  | Cap           | CF8M       |
| 3    | Ball          | CF8M       |
| 4    | Ball Seats    | PTFE       |
| 5    | Stem          | SS 316     |
| 6    | Thrust Washer | PTFE       |
| 7-A  | End Seals     | PTFE       |
| 7-B  | End Seals     | PTFE       |
| 8    | Stem Packing  | PTFE       |
| 9    | Gland         | SS 304     |
| 10   | Handle        | SS 304     |
| 11   | Wahser        | SS 304     |
| 12   | Wahser        | SS 304     |
| 13   | Handle Bolt   | SS 304     |
| 14   | Stopper       | SS 304     |
| 15   | Screw         | SS 304     |
| 16   | Handle Sleeve | VINYL Grip |

\* 我方有權隨時變更材質/設計/規格，以便提供品質優良的產品。  
We reserve the right to modify the design / specification without previous notice for better quality.

MODEL A3W-FE / A4W-FE / A3W-SE

尺寸圖 DIMENSION LIST

型號 Fig. No. : A3W-FE / A4W-FE (1/2"~2")



| SIZE   | A    | B  | C   | d1  | d2   | E   | F  | G   | H  | Port | L    |      |      |      |     |     |
|--------|------|----|-----|-----|------|-----|----|-----|----|------|------|------|------|------|-----|-----|
|        |      |    |     |     |      |     |    |     |    |      | #150 | #300 | PN16 | PN40 | 10K | 20K |
| 1/2"   | 42   | 11 | 130 | 6.0 | 6.0  | 105 | 36 | 42  | 9  | 15   | 152  | 160  | 160  | 160  | 152 | 160 |
| 3/4"   | 48.5 | 14 | 165 | 6.0 | 7.1  | 114 | 42 | 50  | 11 | 20   | 167  | 177  | 177  | 177  | 167 | 177 |
| 1"     | 55.5 | 14 | 165 | 6.0 | 7.1  | 121 | 42 | 50  | 11 | 25   | 190  | 200  | 190  | 190  | 190 | 190 |
| 1-1/4" | 63   | 17 | 205 | 7.1 | 9.2  | 118 | 50 | 70  | 14 | 32   | 208  | 208  | 208  | 208  | 208 | 208 |
| 1-1/2" | 73.5 | 16 | 205 | 7.1 | 9.2  | 128 | 50 | 70  | 14 | 38   | 220  | 234  | 234  | 234  | 220 | 234 |
| 2"     | 92.5 | 21 | 325 | 9.2 | 11.4 | 143 | 70 | 102 | 17 | 50   | 253  | 273  | 273  | 273  | 253 | 273 |

Class 150/300 (1/2"~2")

| SIZE   | Class 150 |       |    |      |     |    |   | Class 300 |       |    |      |     |    |   |
|--------|-----------|-------|----|------|-----|----|---|-----------|-------|----|------|-----|----|---|
|        | D1        | D2    | g  | t    | f   | m  | n | D1        | D2    | g  | t    | f   | m  | n |
| 1/2"   | 89        | 60.5  | 35 | 11.2 | 1.6 | 16 | 4 | 95        | 66.5  | 35 | 14.5 | 1.6 | 16 | 4 |
| 3/4"   | 98        | 70    | 43 | 11.2 | 1.6 | 16 | 4 | 117       | 82.5  | 43 | 16   | 1.6 | 19 | 4 |
| 1"     | 108       | 79.5  | 51 | 11.2 | 1.6 | 16 | 4 | 124       | 89    | 51 | 17.5 | 1.6 | 19 | 4 |
| 1-1/4" | 117       | 89    | 64 | 12.7 | 1.6 | 16 | 4 | 134       | 98.5  | 64 | 19.5 | 1.6 | 19 | 4 |
| 1-1/2" | 127       | 98.5  | 73 | 14.3 | 1.6 | 16 | 4 | 156       | 114.5 | 73 | 21   | 1.6 | 22 | 4 |
| 2"     | 152       | 120.5 | 92 | 15.8 | 1.6 | 16 | 4 | 165       | 127   | 92 | 22.5 | 1.6 | 19 | 8 |

PN16/40 (1/2"~2")

| SIZE   | PN16 |     |     |    |     |    | PN40 |     |     |     |    |     |    |   |
|--------|------|-----|-----|----|-----|----|------|-----|-----|-----|----|-----|----|---|
|        | D1   | D2  | g   | t  | f   | m  | n    | D1  | D2  | g   | t  | f   | m  | n |
| 1/2"   | 95   | 65  | 45  | 14 | 2.0 | 14 | 4    | 95  | 65  | 45  | 16 | 2.0 | 14 | 4 |
| 3/4"   | 105  | 75  | 58  | 16 | 2.0 | 14 | 4    | 105 | 75  | 58  | 18 | 2.0 | 14 | 4 |
| 1"     | 115  | 85  | 68  | 16 | 2.0 | 14 | 4    | 115 | 85  | 68  | 18 | 2.0 | 14 | 4 |
| 1-1/4" | 140  | 100 | 78  | 16 | 2.0 | 18 | 4    | 140 | 100 | 78  | 18 | 2.0 | 18 | 4 |
| 1-1/2" | 150  | 110 | 88  | 16 | 3.0 | 18 | 4    | 150 | 110 | 88  | 18 | 3.0 | 18 | 4 |
| 2"     | 165  | 125 | 102 | 18 | 3.0 | 18 | 4    | 165 | 125 | 102 | 20 | 3.0 | 18 | 4 |

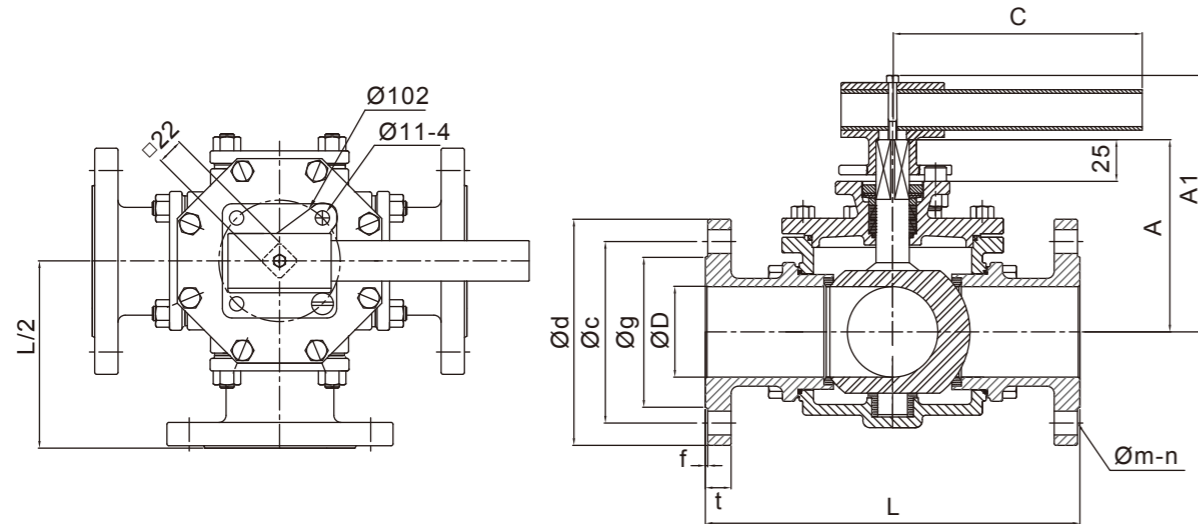
JIS 10K/20K (1/2"~2")

| SIZE   | JIS 10K |     |    |    |     |    | JIS 20K |     |     |    |    |     |    |   |
|--------|---------|-----|----|----|-----|----|---------|-----|-----|----|----|-----|----|---|
|        | D1      | D2  | g  | t  | f   | m  | n       | D1  | D2  | g  | t  | f   | m  | n |
| 1/2"   | 95      | 70  | 51 | 14 | 1.0 | 15 | 4       | 95  | 70  | 51 | 14 | 1.0 | 15 | 4 |
| 3/4"   | 100     | 75  | 56 | 16 | 1.0 | 15 | 4       | 100 | 75  | 56 | 16 | 1.0 | 15 | 4 |
| 1"     | 125     | 90  | 67 | 14 | 1.0 | 19 | 4       | 125 | 90  | 67 | 16 | 1.0 | 19 | 4 |
| 1-1/4" | 135     | 100 | 76 | 18 | 2.0 | 19 | 4       | 135 | 100 | 76 | 18 | 2.0 | 19 | 4 |
| 1-1/2" | 140     | 105 | 81 | 16 | 2.0 | 19 | 4       | 140 | 105 | 81 | 18 | 2.0 | 19 | 4 |
| 2"     | 155     | 120 | 96 | 18 | 2.0 | 19 | 4       | 155 | 120 | 86 | 18 | 2.0 | 19 | 8 |

\* 我方有權隨時變更材質/設計/規格，以便提供品質優良的產品。  
We reserve the right to modify the design / specification without previous notice for better quality.

尺寸圖 DIMENSION LIST

型號 Fig. No. : A3W-FE / A4W-FE (2-1/2"~4")



| SIZE   | A   | A1  | C   | D  | L     |       |       |       |       |       |
|--------|-----|-----|-----|----|-------|-------|-------|-------|-------|-------|
|        |     |     |     |    | #150  | #300  | PN16  | PN40  | 10K   | 20K   |
| 2-1/2" | 144 | 200 | 500 | 62 | 300   | 300   | 300   | 300   | 300   | 300   |
| 3"     | 162 | 218 | 600 | 76 | 305   | 330.4 | 305   | 330.4 | 305   | 330.4 |
| 4"     | 182 | 238 | 750 | 96 | 368.5 | 393.8 | 368.4 | 393.8 | 368.5 | 393.8 |

**Class 150/300 (2-1/2"~4")**

| SIZE   | Class 150 |       |     |     |      |    |   | Class 300 |     |     |     |      |    |   |
|--------|-----------|-------|-----|-----|------|----|---|-----------|-----|-----|-----|------|----|---|
|        | d         | c     | g   | f   | t    | m  | n | d         | c   | g   | f   | t    | m  | n |
| 2-1/2" | 178       | 139.5 | 105 | 1.6 | 17.8 | 19 | 4 | 190       | 149 | 105 | 1.6 | 25.5 | 22 | 8 |
| 3"     | 190       | 152.5 | 127 | 1.6 | 19.2 | 19 | 4 | 210       | 168 | 127 | 1.6 | 29   | 22 | 8 |
| 4"     | 229       | 190.5 | 157 | 1.6 | 24   | 19 | 8 | 254       | 200 | 157 | 1.6 | 32   | 22 | 8 |

**PN16/40 (2-1/2"~4")**

| SIZE   | PN16 |     |     |     |      |    |   | PN40 |     |     |     |    |    |   |
|--------|------|-----|-----|-----|------|----|---|------|-----|-----|-----|----|----|---|
|        | d    | c   | g   | f   | t    | m  | n | d    | c   | g   | f   | t  | m  | n |
| 2-1/2" | 185  | 145 | 122 | 3.0 | 18.0 | 18 | 4 | 185  | 145 | 122 | 3.0 | 22 | 18 | 8 |
| 3"     | 200  | 160 | 138 | 3.0 | 20.0 | 18 | 8 | 200  | 160 | 138 | 3.0 | 24 | 18 | 8 |
| 4"     | 220  | 180 | 158 | 3.0 | 20.0 | 18 | 8 | 235  | 190 | 162 | 3.0 | 24 | 22 | 8 |

**JIS 10K/20K (2-1/2"~4")**

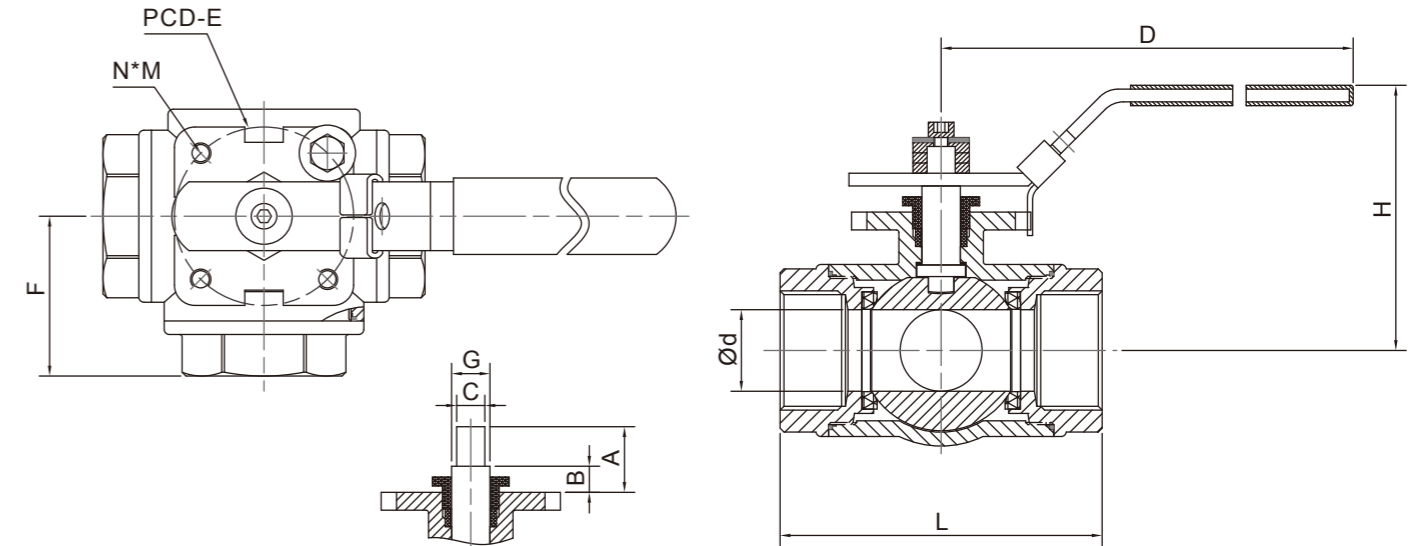
| SIZE   | JIS 10K |     |     |     |    |    |   | JIS 20K |     |     |     |    |    |   |
|--------|---------|-----|-----|-----|----|----|---|---------|-----|-----|-----|----|----|---|
|        | d       | c   | g   | f   | t  | m  | n | d       | c   | g   | f   | t  | m  | n |
| 2-1/2" | 175     | 140 | 116 | 2.0 | 18 | 19 | 4 | 175     | 140 | 116 | 2.0 | 20 | 19 | 8 |
| 3"     | 185     | 150 | 126 | 2.0 | 18 | 19 | 8 | 200     | 160 | 132 | 2.0 | 22 | 23 | 8 |
| 4"     | 210     | 175 | 151 | 2.0 | 18 | 19 | 8 | 225     | 185 | 160 | 2.0 | 24 | 23 | 8 |

\* 我方有權隨時變更材質/設計/規格，以便提供品質優良的產品。

We reserve the right to modify the design / specification without previous notice for better quality.

尺寸圖 DIMENSION LIST

型號 Fig. No. : A3W-SE



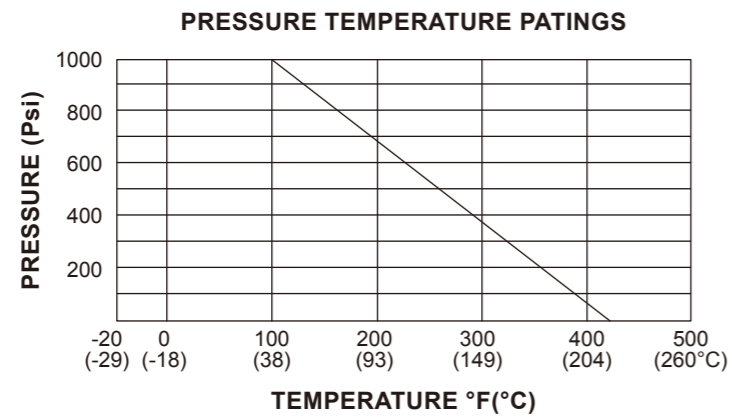
| SIZE   | d    | L     | H   | D   | F    | A     | B     | C  | N | M       | E  | G    |
|--------|------|-------|-----|-----|------|-------|-------|----|---|---------|----|------|
| 1/4"   | 11   | 69.3  | 60  | 131 | 34.7 | 10.35 | 5.35  | 9  | 4 | M5*0.8  | 42 | 12   |
| 3/8"   | 11   | 69.3  | 60  | 131 | 34.7 | 10.35 | 5.35  | 9  | 4 | M5*0.8  | 42 | 12   |
| 1/2"   | 12.5 | 75.7  | 63  | 131 | 38.3 | 10.35 | 5.35  | 9  | 4 | M5*0.8  | 42 | 12   |
| 3/4"   | 16   | 86.6  | 82  | 184 | 44.7 | 13.85 | 6.85  | 11 | 4 | M6*1.0  | 50 | 15   |
| 1"     | 20   | 103   | 87  | 184 | 50.8 | 20    | 8.5   | 11 | 4 | M6*1.0  | 50 | 15   |
| 1-1/4" | 25   | 118.2 | 93  | 184 | 57.7 | 19.35 | 7.85  | 11 | 4 | M6*1.0  | 50 | 15   |
| 1-1/2" | 32   | 125.8 | 103 | 204 | 62.6 | 25.75 | 10.25 | 11 | 4 | M8*1.25 | 70 | 15   |
| 2"     | 38   | 149   | 110 | 227 | 74.3 | 25.25 | 9.75  | 14 | 4 | M8*1.25 | 70 | 18.5 |

\* 我方有權隨時變更材質/設計/規格，以便提供品質優良的產品。

We reserve the right to modify the design / specification without previous notice for better quality.

溫度壓力曲線圖 P/T CHART

型號 Fig. No. : A3W-SE



型號 Fig. No. : A3W-FE, A4W-FE

