



SERIES

金屬密封球閥
Metal Seated Ball Valve



應用 APPLICATIONS

礦業與礦物加工業、化工廠、石油與天然氣工業、高壓流體、蒸氣及高溫流體、一般流體、半導體業、高溫氣體、高黏度流體。
Mining & Mineral Processing, Chemical Plant, Oil & Gas, High Pressure Fluid, Steam & High Temperature Fluid, General Fluid, Semiconductor, Hot Gas, High Viscous Media.

技術資料 TECHNICAL DATA

設計 / 尺寸 Design / Size	ASME B16.34, API 608, EN-12516-1, ISO 17292 1/2" ~ 4" (DN15 ~ DN100)
壓力等級 Pressure Rating	ASME Class 150, 300, PN40, PN16, 1500 WOG
端口 End Connections	法蘭端、牙口端、對焊端、套焊端 Flanged End, Threaded End, Butt Weld End, Socket Weld End
產品檢測 Testing	API 598, ASME B16.104/FCI70-2 (Class V or VI), EN 12266-1
流向 Flow Direction	單向 Uni-Direction
流量 Bore	全流量 Full Bore
認證 Certificate	API 6FA: 801, 803, 816, 840 ISO 15848-1: 801, 803, 816, 840, 339

特點 FEATURES

- 標準工作溫度範圍可達400°C。
 - 以具有競爭力的價格提供卓越的閥門設計。
 - 延長軸心及端蓋可應要求提供。
 - 易燃和非易燃應用的逸散性洩漏控制。可應要求提供。
 - 閥門逸散性排放能力通過 ISO 15848-1 CO3 BH 第三方認證。可應要求提供。
 - 可使用於執行器的 ISO 平台架。
 - 產品標準設計為全流量設計，提供高流量，低擾流。
 - 藉由研磨球和金屬座組以達到緊密的關閉狀態。
 - 可供選擇的各種表面處理及塗層以改善抗腐蝕及磨損的功能。
 - 防火認證 API 6FA。可應要求提供。
 - 較低的操作扭力，便於操作並降低執行器成本。
 - 明確的開關位置指示。
 - 防爆軸心。
 - NACE MR0175 可應要求提供。
 - 可使用附鎖裝置。
 - 根據 ISO 9001 認證的質量體系製造。
 - 多種球座材質可供選擇。
- 除了標準的球座材質，球座有以下材質可供選擇。每個球座選項將滿足廣泛的性能，適用於許多應用：
- Tungsten Carbide
 - Chromium Carbide Nickel Chromium
 - Tungsten Carbide Cobalt Chrome
 - Ni 60
 - Stellite 6
 - Stellite 20
- * 請參考溫壓圖

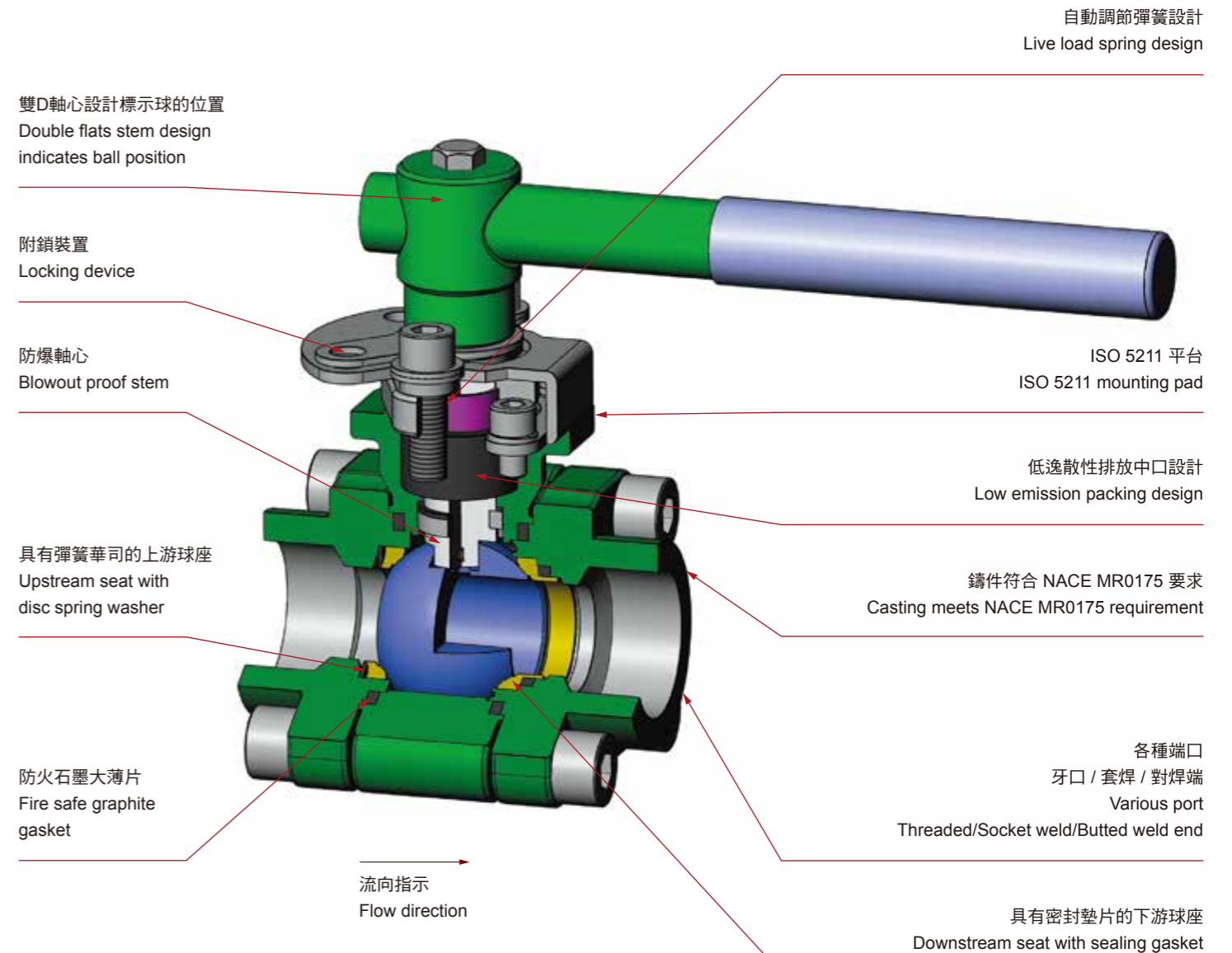
- Typical Service Temperature Range Up to 400 degree C.
 - Superior valve design at a competitive price.
 - Extension Bonnet and End is available on request.
 - Fugitive emissions control for flammable and non-flammable applications. Available on request.
 - Valve fugitive emissions capability third-party certified to ISO 15848-1 CO3 BH. Available on request.
 - Machined ISO actuator mounting pad.
 - Full Port design, as standard, for high flow and minimum turbulence.
 - Tight Shutoff achieved by lapping of ball and metal seat sets.
 - Various surface treatments and coatings available for improved corrosion and abrasion resistance.
 - Fire test certified to API 6FA. Available on request.
 - Lower operating torque for ease of operation and reduced actuator cost.
 - Positive position indication.
 - Blowout-proof shaft.
 - NACE MR0175 available on request.
 - Locking device is available.
 - Manufactured under ISO 9001 certified quality system.
 - Various seat material are available.
- In addition to standard seat material, following variety is available. Each material option will meet a wide range of performance, suitable for many applications.
- Tungsten Carbide
 - Chromium Carbide Nickel Chromium
 - Tungsten Carbide Cobalt Chrome
 - Ni 60
 - Stellite 6
 - Stellite 20
- * Please refer to the Pressure-Temperature rating.

MODEL

339 / 339延長軸心 Extension Bonnet / 801 / 803 / 816 / 840

產品介紹
Product Introduction

339剖面圖



800剖面圖

有槽線標示的方形軸心標示球的位置
Square stem head with slot indicates ball position

附鎖裝置
Locking device

自動調節彈簧墊圈
Live load spring washer

防爆軸心
Blowout proof stem

帶有圓柱形彈簧的上游球座提供壓力釋放
Upstream seat with cylindrical spring provide pressure relief

防火石墨大薄片
Fire safe graphite gasket

流向指示
Flow direction

ISO 5211 高平台
ISO 5211 direct mounting pad

低逸散性排放中口設計
Low emission packing design

自潤軸承
Self lubricant bearing

符合 ASME B16.34 最小壁厚要求
Meet ASME B16.34 min. wall thickness requirement

鑄件符合 NACE MR0175 要求
Casting meets NACE MR0175 requirement

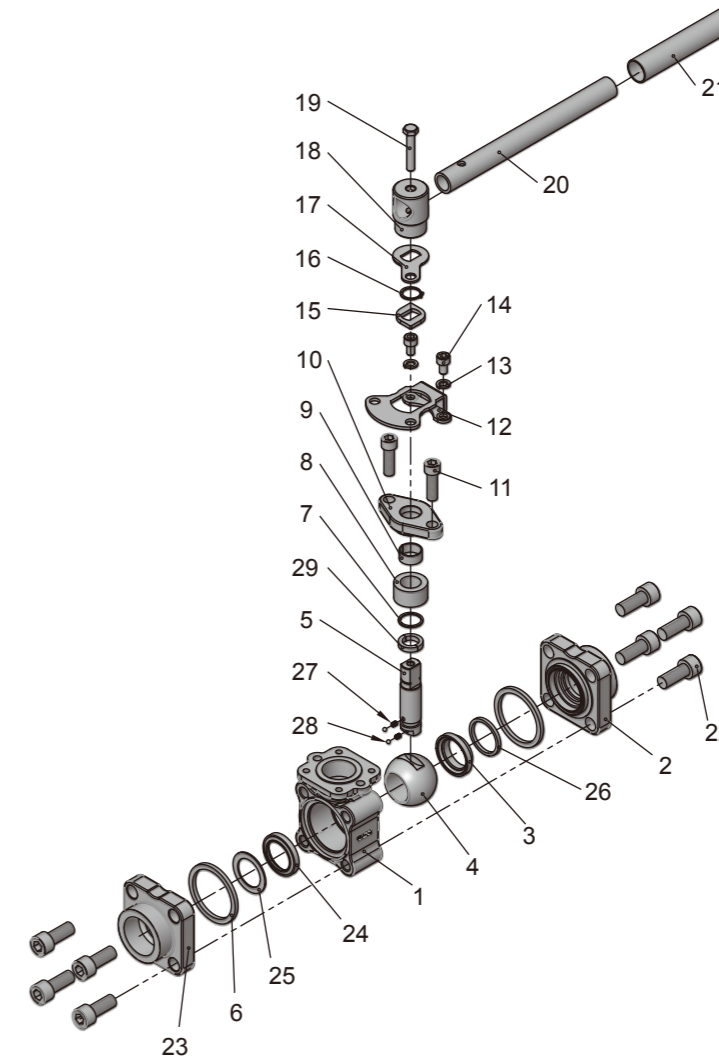
符合標準墊片使用的粗糙度 3.2 ~ 6.3 Ra
3.2 ~ 6.3 Ra standard gasket finish

下游球座
Downstream seat

緊固件符合 NACE MR0175
Fasteners meet NACE MR0175

物料表 MATERIAL COMPOSITION

型號 Fig. No. : 339



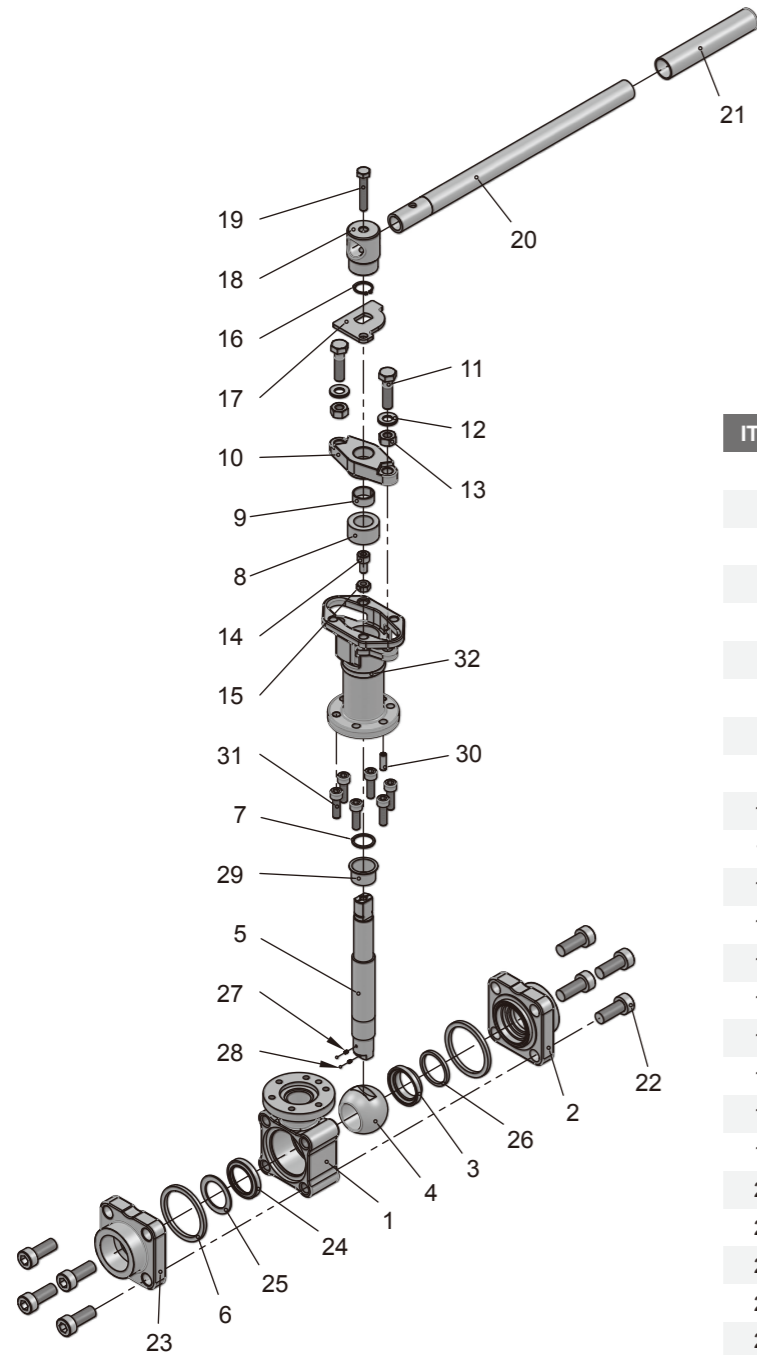
ITEM	PART NAME	STAINLESS STEEL	CARBON STEEL	ITEM	PART NAME	STAINLESS STEEL	CARBON STEEL
1	Body	A351-CF8M	A216-WCB	16	Snap Ring	SS 420	SS 420
2	Down Stream End Cap	F316	A105N	17	Locking Plate	SS 304	SS 304
3	Down Stream Seat	SS316+STL6	SS316+STL6	18	T-Block	A216-WCB	A216-WCB
4	Ball	SS316+Ni Alloy	SS316+Ni Alloy	19	Bolts	Steel+Zn Plated	Steel+Zn Plated
5	Stem	17-4PH	17-4PH	20	Pipe	Steel+Zn Plated	Steel+Zn Plated
6	Body Seal	GRAPHITE	GRAPHITE	21	Pipe Cover	VINYL	VINYL
7	Gasket	SS304+Nitriding	SS304+Nitriding	22	Bolts	A193-B8M CLASS2	A193-B7M
8	Packing	GRAPHITE	GRAPHITE	23	Up Stream End Cap	F316	A105N
9	Stem Bearing	SS304+Nitriding	SS304+Nitriding	24	Up Stream Seats	SS316+STL6	SS304+STL6
10	Gland Flange	A351-CF8	A351-CF8	25	Disc Spring	Inconel X-750	Inconel X-750
11	Gland Bolt	SS 304	SS 304	26	Seat Gasket	GRAPHITE	GRAPHITE
12	Bracket	SS 304	SS 304	27	Spring	SS 316	SS 316
13	Spring Washer	SS 304	SS 304	28	Static Device	SS 316	SS 316
14	Socket Screw	SS 304	SS 304	29	Stem Ring(1/2"~1" Only)	SS 316	SS 316
15	Stopper	SS 304	SS 304				

* 我方有權隨時變更材質/設計/規格，以便提供品質優良的產品。

We reserve the right to modify the design / specification without previous notice for better quality.

物料表 MATERIAL COMPOSITION

型號 Fig. No. : 339延長軸心 Extension Bonnet

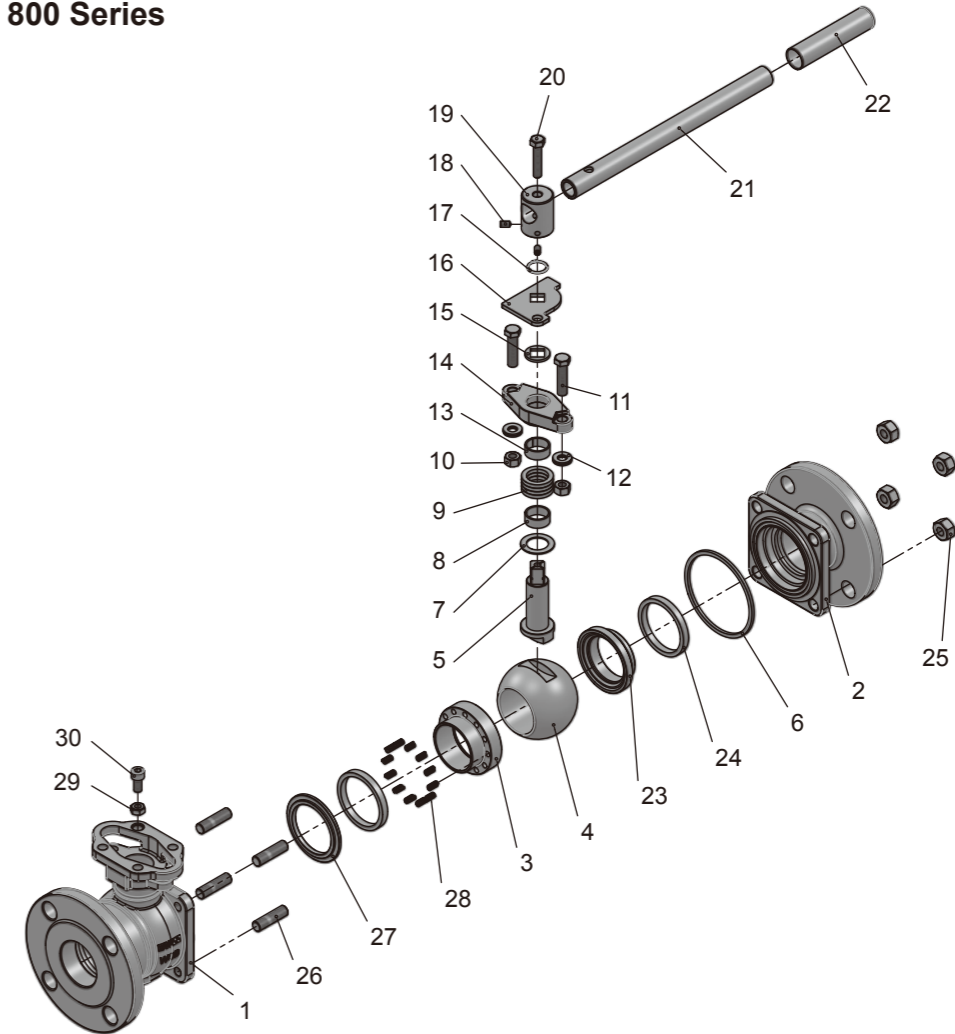


ITEM	PART NAME	STAINLESS STEEL	CARBON STEEL
1	Body	A351-CF8M	A216-WCB
2	Down Stream End Cap	F316	A105N
3	Down Stream Seat	SS316+STL6	SS304+STL6
4	Ball	SS316+Ni Alloy	SS314+Ni Alloy
5	Stem	17-4PH	17-4PH
6	Body Seal	GRAPHITE	GRAPHITE
7	Gasket	PTFE	PTFE
8	Packing	GRAPHITE	GRAPHITE
9	Stem Bearing	SS304+Nitriding	SS304+Nitriding
10	Gland Flange	A351-CF8	A351-CF8
11	Gland Bolt	SS 304	SS 304
12	Spring Washer	SS 304	SS 304
13	Gland Nut	SS 304	SS 304
14	Stop Screw	SS 304	SS 304
15	Stop Nut	SS 304	SS 304
16	Snap Ring	SS 420	SS 420
17	Locking Plate	SS 304	SS 304
18	T-Block	A216-WCB	A216-WCB
19	Bolts	Steel+Zn Plated	Steel+Zn Plated
20	Pipe	Steel+Zn Plated	Steel+Zn Plated
21	Pipe Cover	VINYL	VINYL
22	Bolts	A193-B8M CLASS2	A193-B7M
23	Up Stream End Cap	F316	A105N
24	Up Stream Seats	SS316+STL6	SS304+STL6
25	Disc Spring	Inconel X-750	Inconel X-750
26	Seat Gasket	GRAPHITE	GRAPHITE
27	Spring	SS 316	SS 316
28	Static Device	SS 316	SS 316
29	Bearing	SS304+Nitriding	SS304+Nitriding
30	Spring Pin	SS 304	SS 304
31	Stud	A193-B8M CLASS2	A193-B7M
32	Bracket	A351-CF8M	A216-WCB

* 我方有權隨時變更材質/設計/規格，以便提供品質優良的產品。
We reserve the right to modify the design / specification without previous notice for better quality.

物料表 MATERIAL COMPOSITION

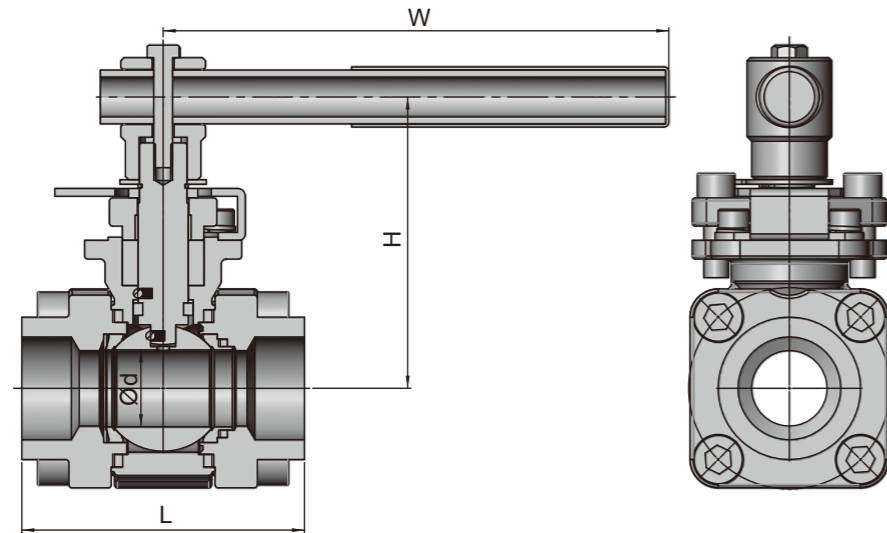
型號 Fig. No. : 800 Series



ITEM	PART NAME	STAINLESS STEEL	CARBON STEEL	ITEM	PART NAME	STAINLESS STEEL	CARBON STEEL
1	Body	A351-CF8M	A216-WCB	16	Locking Plate	SS 304	SS 304
2	End Cap	A351-CF8M	A216-WCB	17	Snap Ring	SS 420	SS 420
3	Body Seat	SS316+Stellite #6	SS304+Stellite #6	18	Set Screw	SS 304	SS 304
4	Ball	SS316+Ni Alloy	SS304+Ni Alloy	19	T-Block	A216-WCB	A216-WCB
5	Stem	XM-19	17-4PH	20	Hex Bolt	Steel+Zn Plated	Steel+Zn Plated
6	Body Seal	316L+GRAPHITE	316L+GRAPHITE	21	Pipe	Steel+Zn Plated	Steel+Zn Plated
7	Gasket	316L+Nitriding	316L+Nitriding	22	Pipe Cover	VINYL	VINYL
8	Packing	GRAPHITE	GRAPHITE	23	Hex Bolt	Steel+Zn Plated	Steel+Zn Plated
9	Stem Bearing	PTFE	PTFE	24	End Cap Seats	SS316+Stellite #6	SS304+Stellite #6
10	Gland Nuts	SS 304	SS 304	25	Nuts	A194-2HM	A194-8M
11	Gland Bolt	SS 304	SS 304	26	Bolts	A193-B7M	A193-B8M
12	Belleville Spring Washer	SS 301	SS 301	27	Seat Seal Packing Ring	SUS316	SUS316
13	Gland Bush	SS316+Nitriding	SS304+Nitriding	28	Spring	INCONEL X-750	INCONEL X-750
14	Gland Flange	A351-CF8	A351-CF8	29	Locking Nut	SS 304	SS 304
15	Sleeve	SS 304	SS 304	30	Locking Screw	SS 304	SS 304

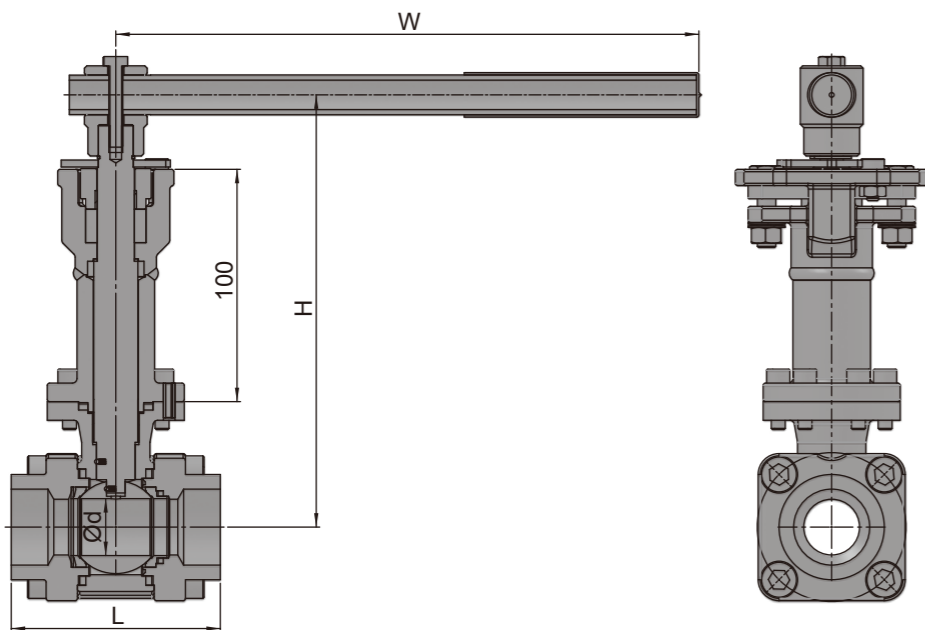
* 我方有權隨時變更材質/設計/規格，以便提供品質優良的產品。
We reserve the right to modify the design / specification without previous notice for better quality.

尺寸圖 DIMENSION LIST



339 (Class 800)

SIZE	d	L	W	H	ISO5211
1/2"	16	75	135	79	F05
3/4"	20	80	135	81.35	F05
1"	24.5	90	160	91.2	F05
1-1/2"	38	120	230	117.1	F07
2"	50	140	230	134.6	F07



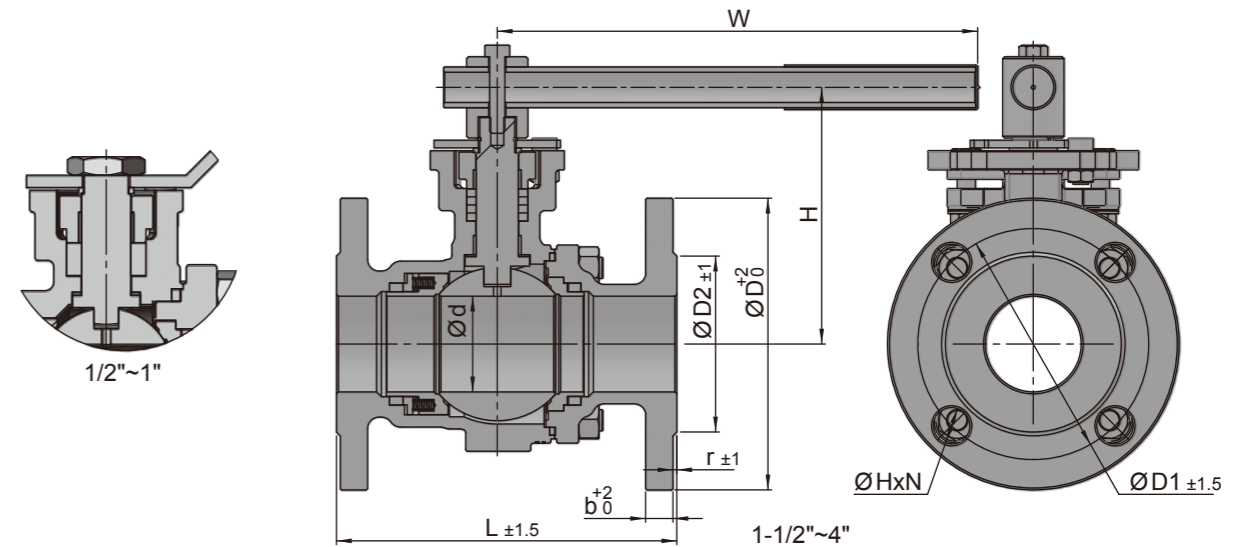
339延長軸心 Extension Bonnet

SIZE	d	L	W	H	ISO5211
1/2"	16	75	180	172.3	F05
3/4"	20	80	180	174.8	F05
1"	24.5	90	230	186.1	F05
1-1/2"	38	120	450	220.7	F07
2"	50	140	450	230.2	F07

* 我方有權隨時變更材質/設計/規格，以便提供品質優良的產品。

We reserve the right to modify the design / specification without previous notice for better quality.

尺寸圖 DIMENSION LIST



801 (Class 150)

SIZE	d	D2	D1	D	b	r	L	ØH-N	W	H	ISO5211
1/2"	16	34.9	60.3	89	9	2	108	1/2"-13UNC	186.5	98.2	F05
3/4"	20	42.9	69.9	99	9.5	2	117	1/2"-13UNC	186.5	98.2	F05
1"	25	50.8	88.9	108	9.7	2	127	16x4	186.5	98.2	F05
1-1/2"	38	73	98.5	127	12.7	2	165	16x4	250	111.6	F07
2"	50	91.9	120.7	152	14.2	2	178	19x4	250	134.1	F07
3"	76.2	127	152.4	190	17.5	2	203	19x4	420	173.6	F10
4"	100	157.2	190.5	229	22.4	2	229	19x8	560	205	F10

803 (Class 300)

SIZE	d	D2	D1	D	b	r	L	ØH-N	W	H	ISO5211
1/2"	16	34.9	66.7	95	12.7	2	140	16x4	186.5	98.2	F05
3/4"	20	42.9	82.6	117	14.2	2	152	19x4	186.5	98.2	F05
1"	25	50.8	88.9	124	15.7	2	165	19x4	186.5	98.2	F05
1-1/2"	38	73	114.3	155	19	2	190.5	22x4	250	111.85	F07
2"	50	91.9	127	165	20.6	2	216	19x8	250	134.4	F07
3"	76.2	127	168.3	210	26.9	2	283	22x8	486	184.3	F10
4"	100	157.2	200	254	30.2	2	305	22x8	1100	224.3	F12

840 (PN40)

SIZE	d	D2	D1	D	b	r	L	ØH-N	W	H	ISO5211
1/2"	16	45	65	95	14	2	130	14x4	186.5	98.2	F05
3/4"	20	58	75	105	16	2	150	14x4	186.5	98.2	F05
1"	25	68	85	115	16	2	160	14x4	186.5	98.2	F05
1-1/2"	38	88	110	150	15	3	200	18x4	250	111.9	F07
2"	50	102	125	165	17	3	230	18x4	250	134.4	F07
3"	76.2	138	160	200	21	3	280	18x8	486	184.3	F10
4"	100	162	190	235	21	3	300	22x8	1100	224.3	F12

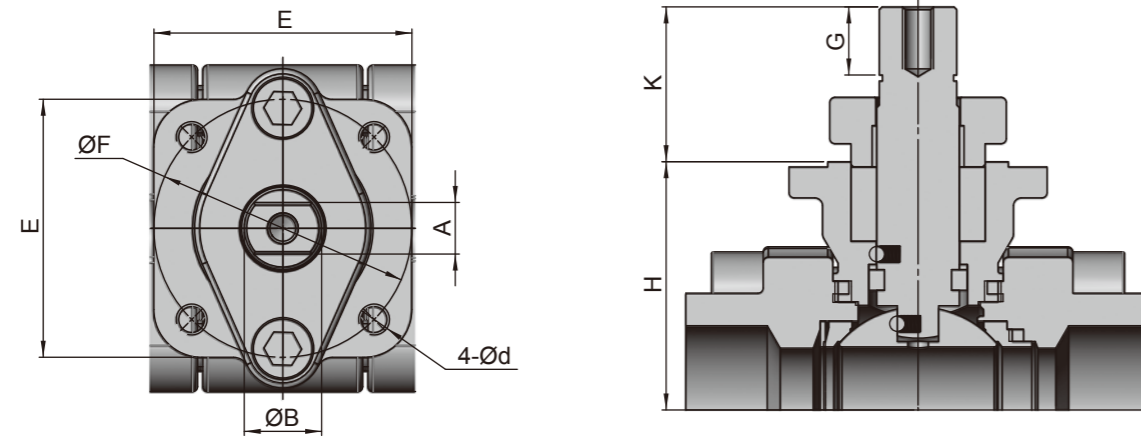
816 (PN16)

SIZE	d	D2	D1	D	b	r	L	ØH-N	W	H	ISO5211
2-1/2"	63.5	122	145	185	15	3	270	18x4	420	163.1	F10
3"	76.2	138	160	200	17	3	280	18x8	420	173.6	F10
4"	100	158	220	220	17	3	300	18x8	560	205	F10

* 我方有權隨時變更材質/設計/規格，以便提供品質優良的產品。

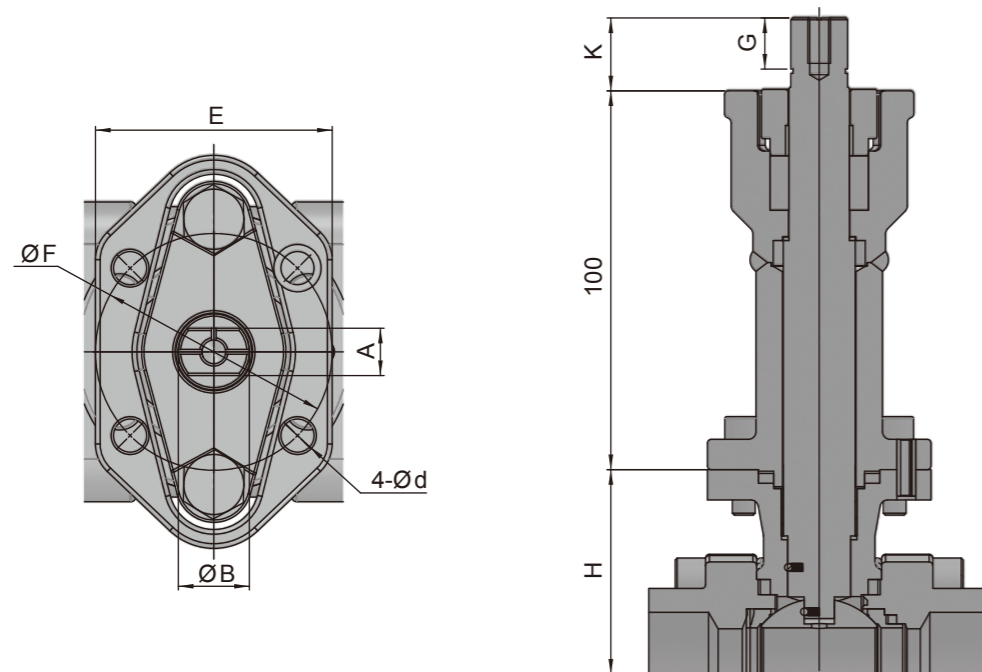
We reserve the right to modify the design / specification without previous notice for better quality.

平台架尺寸 DIMENSIONS OF ISO MOUNTING PAD



339

SIZE	A	B	d	E	F	G	K	H	ISO5211
1/2"	8	12	M6	47.5	50	8.4	23.2	37.55	F05
3/4"	8	12	M6	50.7	50	8.4	23.2	39.95	F05
1"	10	15	M6	50	50	13.2	30	48.1	F05
1-1/2"	14	19	M8	75.5	70	16.3	39.8	60.85	F07
2"	14	19	M8	75.5	70	16.3	44.6	73.5	F07



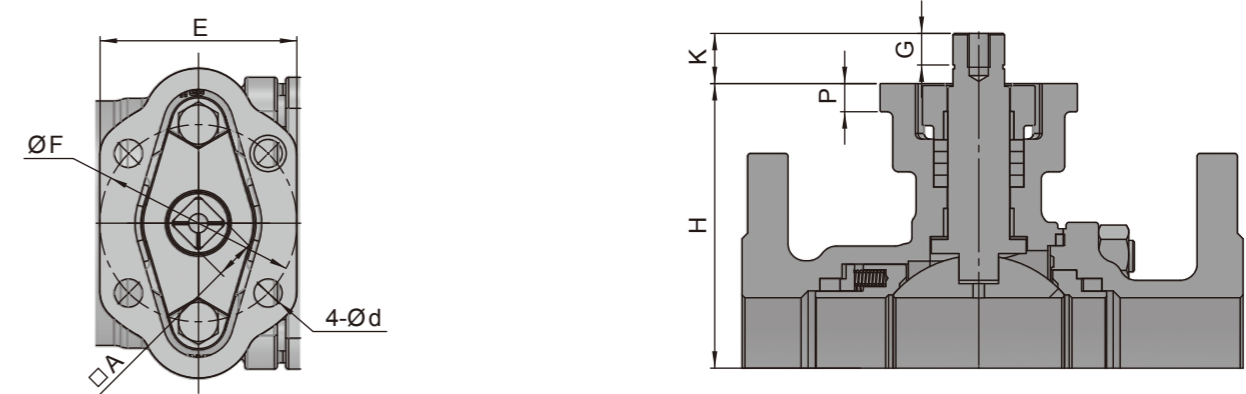
339延長軸心 Extension Bonnet

SIZE	A	B	d	E	F	G	K	H	ISO5211
1/2"	8	12	7	50	50	9	14.2	40.5	F05
3/4"	8	12	7	50	50	9	14.2	43	F05
1"	10	15	7	50	50	13.5	19.3	54	F05
1-1/2"	14	19	10	75.5	70	18.5	38.4	68	F07
2"	14	19	10	75.5	70	18.5	38.4	77.5	F07

* 我方有權隨時變更材質/設計/規格，以便提供品質優良的產品。

We reserve the right to modify the design / specification without previous notice for better quality.

平台架尺寸 DIMENSIONS OF ISO MOUNTING PAD



801 (Class 150)

SIZE	A	P	d	E	F	G	K	H	ISO5211
1/2"	11	7	7	50	50	-	10.6	60.3	F05
3/4"	11	7	7	50	50	-	10.6	60.3	F05
1"	11	7	7	50	50	-	10.6	60.3	F05
1-1/2"	14	8	10	70	70	10.8	17.35	78.9	F07
2"	14	10	10	70	70	11.2	17.8	101	F07
3"	17	13	12	100	102	13.7	20.2	134.4	F10
4"	22	13	12	100	102	15.1	22.2	156.8	F10

803 (Class 300)

SIZE	A	P	d	E	F	G	K	H	ISO5211
1/2"	11	7	7	50	50	-	10.6	60.3	F05
3/4"	11	7	7	50	50	-	10.6	60.3	F05
1"	11	7.7	7	50	50	-	10.6	60.3	F05
1-1/2"	14	9	10	70	70	10.8	17.4	78.9	F07
2"	14	10.8	10	70	70	11.2	17.8	101	F07
3"	22	13	12	100	102	15.2	22.9	137	F10
4"	27	13	14	113.4	125	19.6	27.2	170.2	F12

840 (PN40)

SIZE	A	P	d	E	F	G	K	H	ISO5211
1/2"	11	7	7	50	50	-	110.6	60.3	F05
3/4"	11	7	7	50	50	-	10.6	60.3	F05
1"	11	7.7	7	50	50	-	10.6	60.3	F05
1-1/2"	14	9	10	70	70	10.8	17.4	78.9	F07
2"	14	10.8	10	70	70	11.2	17.8	101	F07
3"	22	13	12	100	102	15.2	22.9	137	F10
4"	27	13	14	113.4	125	19.6	27.2	170.2	F12

816 (PN16)

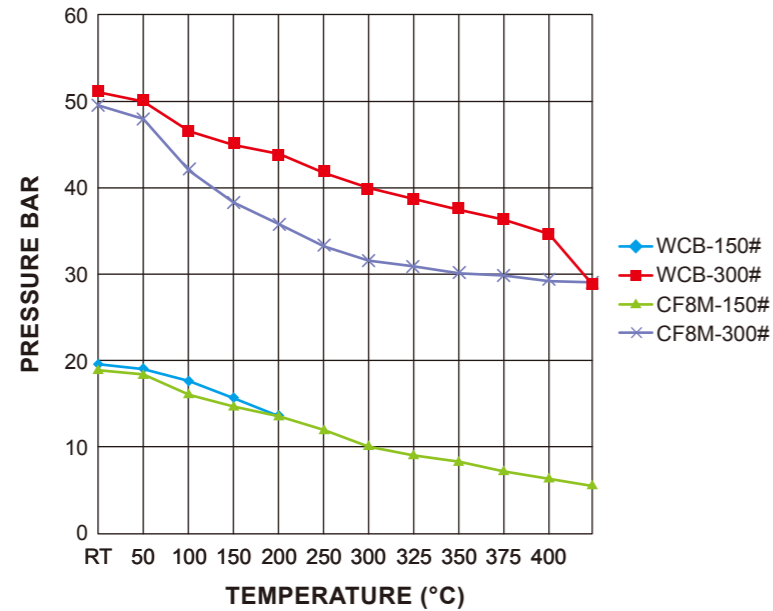
SIZE	A	P	d	E	F	G	K	H	ISO5211
2-1/2"	17	13	12	100	102	13.7	20.2	123.9	F10
3"	17	13	12	100	102	13.7	20.2	134.4	F10
4"	22	13	12	100	102	15.1	22.2	156.8	F10

* 我方有權隨時變更材質/設計/規格，以便提供品質優良的產品。

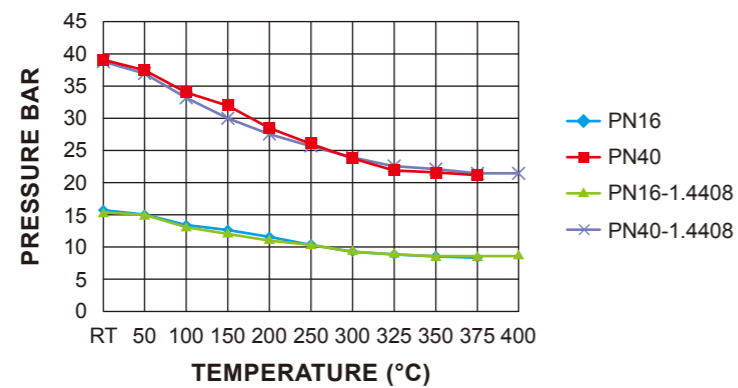
We reserve the right to modify the design / specification without previous notice for better quality.

溫度壓力曲線圖 P/T CHART

型號 Fig. No. : 801, 803



型號 Fig. No. : 816, 840

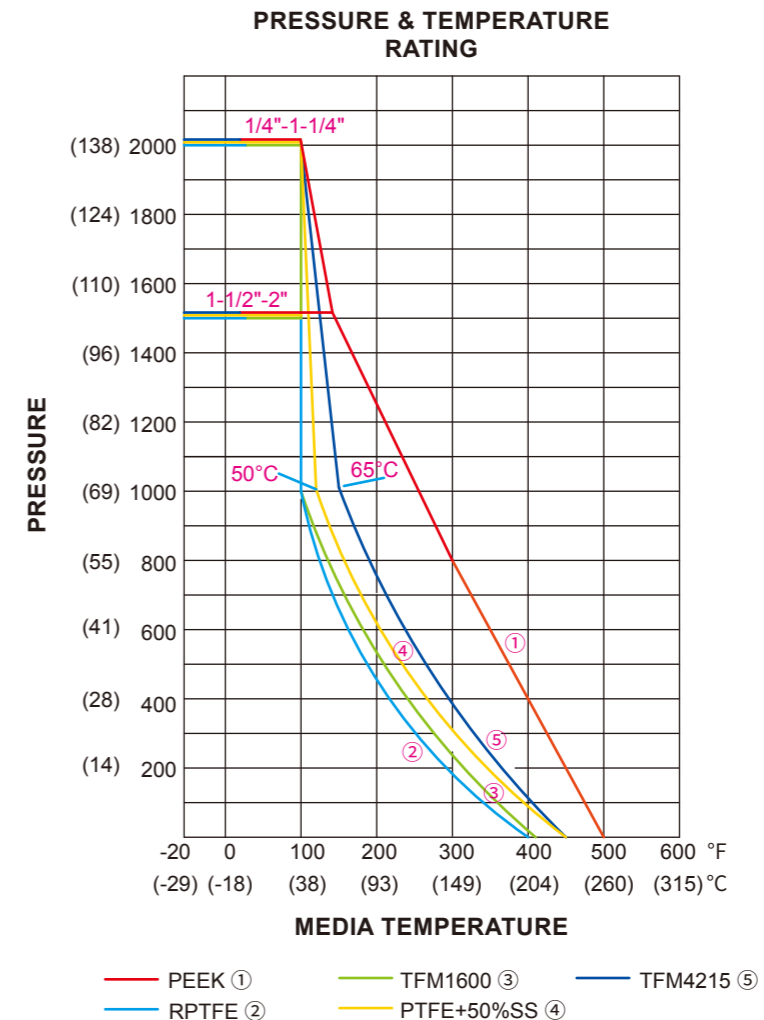


Remark:

- It is recommended that the appropriate seat material, providing a higher pressure & temperature, is selected, if you feel the standard material is borderline and you prefer a larger safety allowance.
- For steam service, options available are PEEK, PTFE+50%SS, or Metal seat, depending on the service application.
- Final selection of seat material is the user's choice, experience & responsibility.
- Solid Lines-Continuous Temperature
Dotted Lines-Intermittent / Peak Temperature

溫度壓力曲線圖 P/T CHART

型號 Fig. No. : 339



Remark:

- It is recommended that the appropriate seat material, providing a higher pressure & temperature, is selected, if you feel the standard material is borderline and you prefer a larger safety allowance.
- For steam service, options available are PEEK, PTFE+50%SS, or Metal seat, depending on the service application.
- Final selection of seat material is the user's choice, experience & responsibility.
- Solid Lines-Continuous Temperature
Dotted Lines-Intermittent / Peak Temperature