



逆止閥

Check Valve

MODEL

**K5 / K5-Forge / K6 / K7-Dual Plate
K7-Single Plate / K8 / K9**

產品介紹

Product Introduction

應用 APPLICATIONS

礦業與礦物加工業、水與汙水處理、化工廠、汽車工業、造船工業、一般流體。
Mining & Mineral Processing, Water & Waste Water, Chemical Plant, Automotive Industry, Ship-Building Industry, General Fluid.

技術資料 TECHNICAL DATA

設計 Design	B16.34, API 602, API 594, DN12516-1
尺寸 Size	1/2" ~ 24"
壓力等級 Pressure Rating	600 WOG, ASME Class 150 ~ 2500, PN40
端口 End Connections	牙口 Threaded: K5, K8 套焊 Socket Weld: K5 對夾 Wafer: K7雙瓣式 Dual Plated, K7單瓣式 Single Plated, K9 凸耳 Lug: K7雙瓣式 Dual Plated 法蘭 Flanged: K6
產品檢測 Testing	API 598, EN12266-1

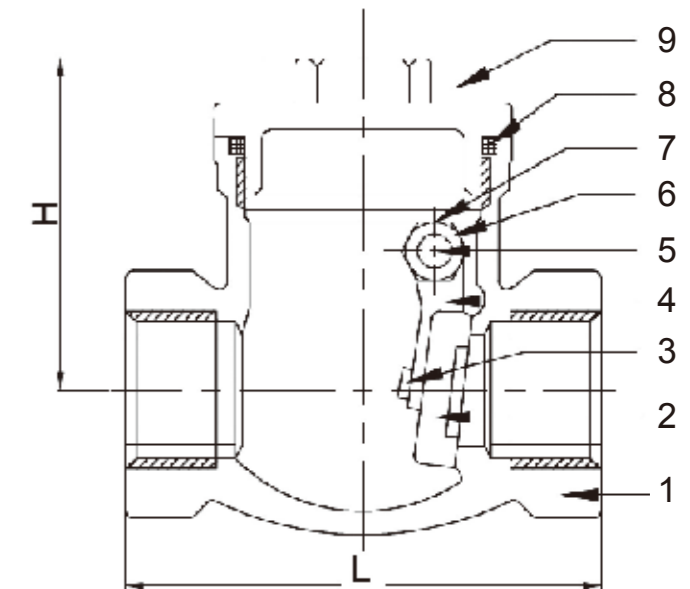


特點 FEATURES

- 以具有競爭力的價格提供卓越的閥門設計。
 - K7雙瓣式逆止閥有一般式及內裝式可供選擇。
 - 明確的方向指示。
 - 根據 ISO 9001 認證的質量體系製造。
 - 多種球座材質可供選擇。
- 除了標準的球座材質，球座有以下材質可供選擇。每個球座選項將滿足廣泛的性能，適用於許多應用：
- Metal Seat
 - Stellite 6 Body Seat (K5, K6, K7)
 - Stellite 6 Body + Disc Sealing (K5, K6, K7)
 - Buna-N (K7)
 - EPDM (K7)
 - Viton (K7)
- Superior valve design at a competitive price.
 - Both conventional and retainerless style available for K7 dual plated check valve.
 - Positive direction indication.
 - Manufactured under ISO 9001 certified quality system.
 - Various seat material are available.
- In addition to standard seat material, following variety is available. Each material option will meet a wide range of performance, suitable for many applications.
- Metal Seat
 - Stellite 6 Body Seat (K5, K6, K7)
 - Stellite 6 Body + Disc Sealing (K5, K6, K7)
 - Buna-N (K7)
 - EPDM (K7)
 - Viton (K7)

物料表 MATERIAL COMPOSITION

型號 Fig. No. : K5



ITEM	PART NAME	Q'TY	MATERIAL
1	Body	1	316;CF8M
2	Disc	1	316;CF8M
3	Disc nut	1	316;CF8M
4	Connecting Rod	1	316;CF8M
5	Pin	1	316
6	Bolt	1	316
7	Bolt Washer	1	Teflon
8	Gasket	1	Teflon
9	Cap	1	316;CF8M

尺寸圖 DIMENSION LIST

K5 (600psi)

VALVE SIZE	1/4"	3/8"	1/2"	3/4"	1"	1-1/4"	1-1/2"	2"	2-1/2"	3"
L m/m	60.0	60.0	60.0	78.0	83.0	94.5	105.0	123.5	152.5	174.5
H m/m	42.5	42.5	42.5	48.5	55.0	59.0	64.0	72.0	92.5	105.0
WEIGHT(KG)	0.26	0.25	0.25	0.39	0.49	0.79	1.05	1.57	3.04	4.89
CV	2	4	12	27	53	82	111	223	332	465

* 我方有權隨時變更材質/設計/規格，以便提供品質優良的產品。

We reserve the right to modify the design / specification without previous notice for better quality.



逆止閥

Check Valve

MODEL

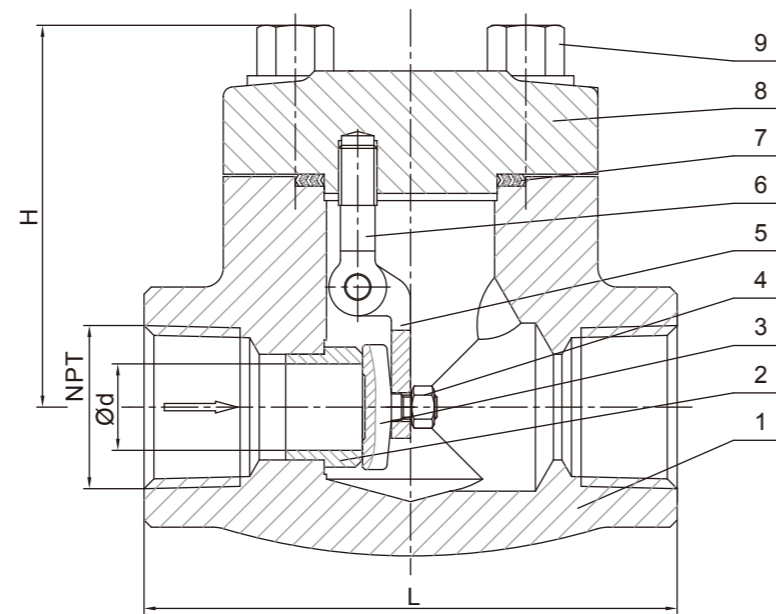
K5 / K5-Forge / K6 / K7-Dual Plate
K7-Single Plate / K8 / K9

產品介紹

Product Introduction

物料表 MATERIAL COMPOSITION

型號 Fig. No. : K5-Forge



ITEM	PART NAME	MATERIAL
1	Body	A105
2	Seat	A276 420
3	Disc	A276 420
4	Nut	S.S
5	Hinge	A351 CF8
6	Yoke	S.S
7	Gasket	304SS+Graphite
8	Bonnet	A105
9	Bolt	A193 B7

尺寸圖 DIMENSION LIST

K5-Forge (Class 800)

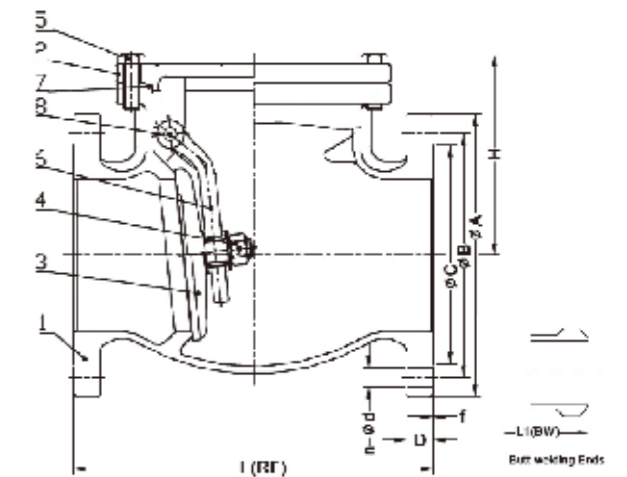
SIZE	CLASS	DIMENSION(mm)			
		L	NPT	Ød	H
1/2"	800	79	1/2"	9.5	54
3/4"	800	92	3/4"	13	57
1"	800	111	1"	17.5	65
1-1/4"	800	120	1-1/4"	23	82
1-1/2"	800	120	1-1/2"	29	85
2"	800	140	2"	37	107

* 我方有權隨時變更材質/設計/規格，以便提供品質優良的產品。

We reserve the right to modify the design / specification without previous notice for better quality.

物料表 MATERIAL COMPOSITION

型號 Fig. No. : K6



ITEM	PART NAME	MATERIAL
1	Body	A351-CF8/1.4308 A351-CF8M/1.4408
2	Cover	A351-CF8/1.4308 A351-CF8M/1.4408
3	Disc	A351-CF8/1.4308 A351-CF8M/1.4408
4	Disc Nut	ANSI-304/1.4301 ANSI-316/1.4401
5	Cover Bolt/Nut	ANSI-304/1.4301 ANSI-304/1.4301
6	ARM	A351-CF8/1.4308 A351-CF8M/1.4408
7	Gasket	PTFE / Graphite PTFE / Graphite
8	Pin	ANSI-304/1.4301 ANSI-316/1.4401

尺寸圖 DIMENSION LIST

K6 (Class 150)

SIZE	Unit: mm															
	IN	1/2	3/4	1	1 1/2	2	2 1/2	3	4	5	6	8	10	12	16	
L(RF)&1(BW)	108	117	127	165	203	216	241	292	330	356	495	622	698	864		
H	55	58	63	76	97	103	128	151	169	198	246	315	376	410		
ØA	89	98	108	127	152	178	190	2298	254	278	343	406	483	597		
ØB	60.5	70	79.5	98.5	120.5	139.5	152.5	190.5	216	241.5	298.5	362	432	540		
ØC	35	43	51	73	92	105	127	157	186	216	270	324	381	470		
D	11.2	11.2	11.2	14.3	15.9	17.5	19.1	23.9	23.9	25.4	28.6	30.2	31.8	36.6		
f	1.6	1.6	1.6	1.6	1.6	1.6	1.6	1.6	1.6	1.6	1.6	1.6	1.6	1.6		
n-Ød	4-16	4-16	4-16	4-16	4-19	4-19	4-19	8-19	8-22	8-22	8-22	12-25	12-25	16-29		
WEIGHT(KG)	1.6	2.1	2.7	5.2	7.7	12.3	16.1	26.6	33.2	46.2	82.4	138	205	361		

K6 (PN16)

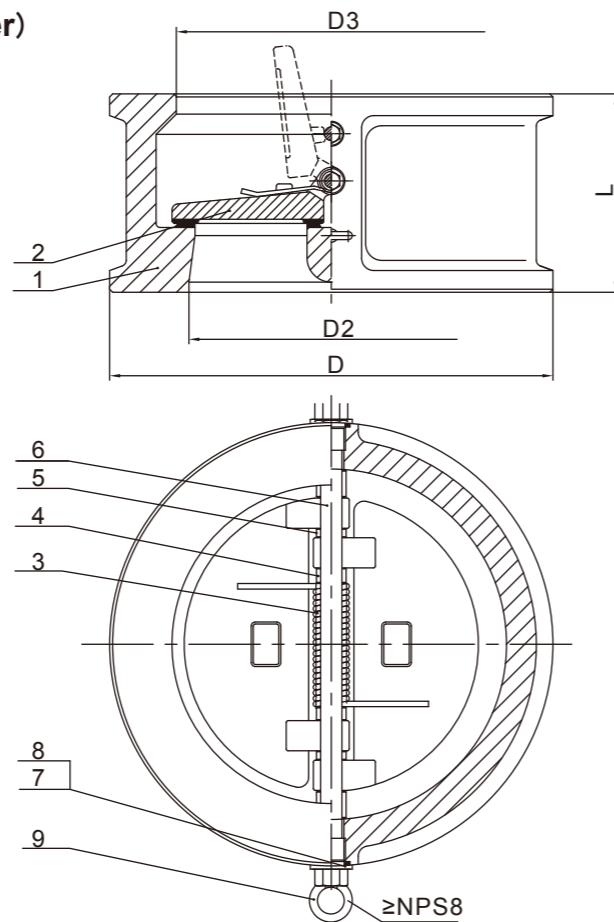
SIZE	Unit: mm					
	IN	1/2	3/4	1	1 1/2	2
L(RF)	115	120	125	200	230	290
H	55	58	63	76	97	103
ØA	95	105	115	150	165	185
ØB	65	75	85	110	125	145
ØC	45	58	68	88	102	122
D	14	16	16	16	18	18
f	2	2	2	3	3	3
n-Ød	4-14	4-14	4-14	4-18	4-18	4-18

* 我方有權隨時變更材質/設計/規格，以便提供品質優良的產品。

We reserve the right to modify the design / specification without previous notice for better quality.

物料表 MATERIAL COMPOSITION

型號 Fig. No. : K7-雙瓣式 Dual Plated (對夾式 Wafer)



ITEM	PART NAME	MATERIAL	SPECIFICATION
1	Body	Cast Steel	ASTM A216 WCB-F6
2	Disc	Cast Steel	ASTM A351 CF8
3	Spring	Alloy Steel	Inconel X750
4	Spring Plate	Stainless Steel	ASTM A182 F6
5	Spacer	Stainless Steel	ASTM A182 F6
6	Hinge Pin	Stainless Steel	ASTM A182 F6
7	Gasket	Stainless Steel	ASTM A182 F6
8	Plug	Stainless Steel	ASTM A182 F6
9	Flying Rings	Carbon Steel	

尺寸圖 DIMENSION LIST

K7-Dual Plated, Wafer Type (Class 150)

VALVE SIZE	L	D	D2	D3	WEIGHT (KG)
2"	60	103	51	58	2
2-1/2"	67	122	65	73	3
3"	73	135	80	88	4
4"	73	173	102	108	6
5"	86	195	127	132	8
6"	98	220	152	160	13
8"	127	277	203	210	25
10"	146	337	254	266	39
12"	181	407	305	310	58
14"	184	448	350	355	85
16"	191	512	400	405	114
18"	203	547	450	455	138
20"	219	604	500	505	163
24"	222	715	600	605	285

K7-Dual Plated, Wafer Type (Class 300)

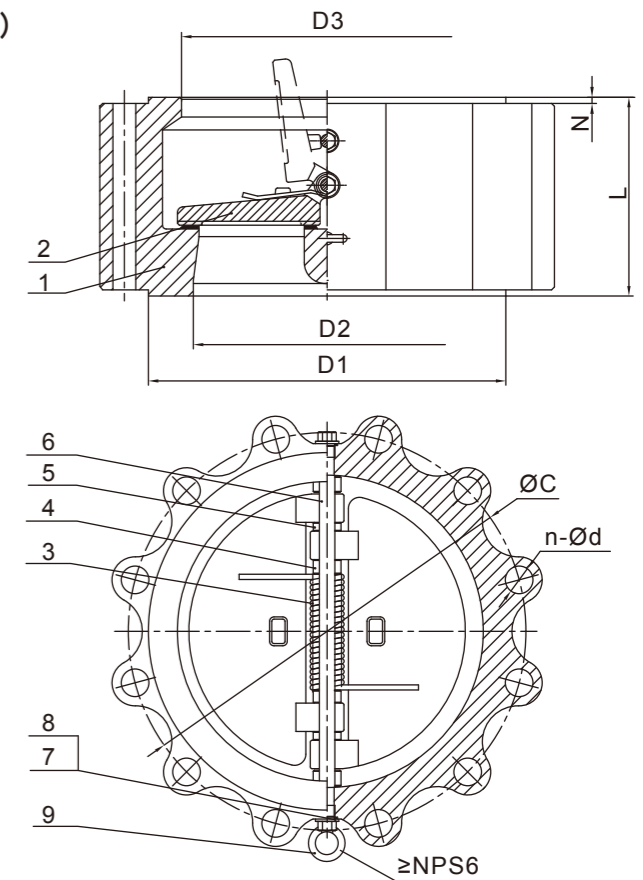
VALVE SIZE	L	D	D2	D3	WEIGHT (KG)
2"	60	110	51	58	3
2-1/2"	67	128	65	73	4
3"	73	147	80	88	6
4"	73	179	102	108	8
5"	86	214	127	132	15
6"	98	249	152	160	18
8"	127	305	203	210	31
10"	146	359	254	266	51
12"	181	420	305	310	83
14"	222	483	350	355	117
16"	232	537	400	405	190
18"	264	594	450	455	200
20"	292	652	500	505	265
24"	318	772	600	608	410

* 我方有權隨時變更材質/設計/規格，以便提供品質優良的產品。

We reserve the right to modify the design / specification without previous notice for better quality.

物料表 MATERIAL COMPOSITION

型號 Fig. No. : K7-雙瓣式 Dual Plated (凸耳式 Lug)



ITEM	PART NAME	MATERIAL	SPECIFICATION
1	Body	Cast Steel	ASTM A216
2	Disc	Cast Steel	WCB-F6
3	Spring	Alloy Steel	ASTM A351 CF8
4	Spring Plate	Stainless Steel	Inconel X750
5	Spacer	Stainless Steel	ASTM A182 F6
6	Hinge Pin	Stainless Steel	ASTM A182 F6
7	Gasket	Stainless Steel	ASTM A182 F6
8	Plug	Stainless Steel	ASTM A182 F6
9	Flying Rings	Carbon Steel	

尺寸圖 DIMENSION LIST

K7-Dual Plated, Lug Type (Class 150)

VALVE SIZE	L	ØC	D1	D2	D3	N	n-Ø d	WEIGHT (KG)
2"	60	120.5	92	51	58	2	4-Ø 19	4
2-1/2"	67	139.5	105	65	73	2	4-Ø 19	5.5
3"	73	152.5	127	80	88	2	4-Ø 19	7
4"	73	190.5	157	102	108	2	8-Ø 19	11
5"	86	216	186	127	132	2	8-Ø 22.5	15
6"	98	241.5	216	152	160	2	8-Ø 22.5	19
8"	127	298.5	270	203	210	2	8-Ø 22.5	36
10"	146	362	324	254	266	2	12-Ø 25.5	61
12"	181	432	381	305	310	2	12-Ø 25.5	119
14"	184	476	413	350	355	2	16-Ø 28.5	131
16"	191	540	470	400	405	2	16-Ø 28.5	180
18"	203	578	533	450	455	2	16-Ø 32	203
20"	219	635	584	500	505	2	20-Ø 32	275
24"	222	749.5	692	600	605	2	20-Ø 35	314

K7-Dual Plated, Lug Type (Class 300)

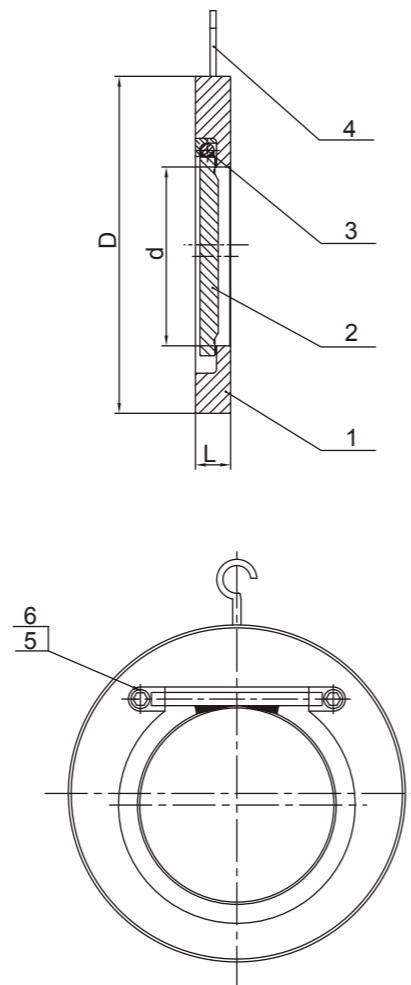
VALVE SIZE	L	ØC	D1	D2	D3	N	n-Ø d	WEIGHT (KG)
2"	60	127	92	51	58	2	8-Ø 19	6
2-1/2"	67	149	105	65	73	2	8-Ø 22.5	7
3"	73	168.5	127	80	88	2	8-Ø 22.5	10
4"	73	200	157	102	108	2	8-Ø 22.5	16
5"	86	235	186	127	132	2	8-Ø 22.5	29
6"	98	270	216	152	160	2	12-Ø 22.5	32
8"	127	330	270	203	210	2	12-Ø 25.5	55
10"	146	387.5	324	254	266	2	16-Ø 28.5	82
12"	181	451	381	305	310	2	16-Ø 32	92
14"	222	514.5	413	350	355	2	20-Ø 32	251
16"	232	571.5	470	400	405	2	20-Ø 35	342
18"	264	628.5	533	450	455	2	24-Ø 35	391
20"	292	686	584	500	505	2	24-Ø 35	536
24"	318	813	692	600	605	2	24-Ø 41	833

* 我方有權隨時變更材質/設計/規格，以便提供品質優良的產品。

We reserve the right to modify the design / specification without previous notice for better quality.

物料表 MATERIAL COMPOSITION

型號 Fig. No. : K7-單瓣式 Single Plated



ITEM	PART NAME	SPECIFICATION
1	Body	ASTM A105+13Cr
2	Disc	ASTM A105+13Cr
3	Hinge Pin	ASTM A276 410
4	Flying Rings	ASTM A29 1025+Zn
5	Location	ASTM A276 410
6	Bolt	CS

尺寸圖 DIMENSION LIST

K7-Single Plated (Class 150)

VALVE SIZE	d	L	D	WEIGHT (KG)
1"	14	19	66	0.5
1-1/2"	22	19	84	0.7
2"	30	19	104	1.2
2-1/2"	40	19	123	1.6
3"	52	19	136	2
4"	71	19	174	3.4
5"	93	19	196	4.3
6"	114	19	221	5.3
8"	157	29	278	12
10"	195	29	338	17
12"	230	38	408	33
14"	270	44	449	44
16"	310	51	513	66
18"	360	60	548	86
20"	406	64	605	110
24"	490	70	716	165

K7-Single Plated (Class 300)

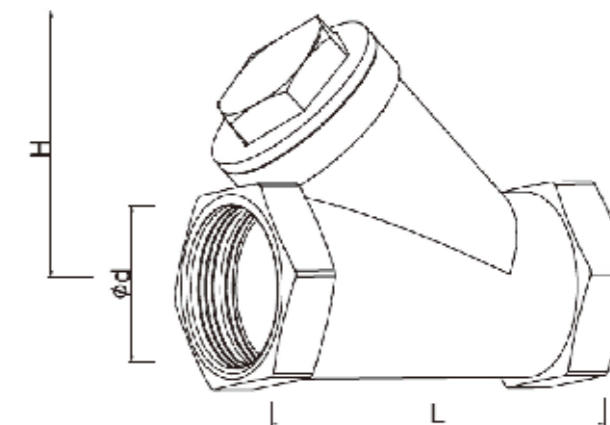
VALVE SIZE	d	L	D	WEIGHT (KG)
1"	14	19	73	0.6
1-1/2"	22	19	94	0.8
2"	30	19	111	1.3
2-1/2"	40	19	129	1.8
3"	52	19	148	2.3
4"	71	19	180	3.4
5"	93	19	215	4.8
6"	114	22	250	7.5
8"	157	29	306	14
10"	195	38	360	25
12"	230	51	421	52
14"	270	51	484	62
16"	310	51	538	75
18"	360	76	595	130
20"	406	83	653	170
24"	490	90	772	255

* 我方有權隨時變更材質/設計/規格，以便提供品質優良的產品。

We reserve the right to modify the design / specification without previous notice for better quality.

物料表 MATERIAL COMPOSITION

型號 Fig. No. : K8



ITEM	PART NAME	Q'TY	MATERIAL
1	Body	1	316;CF8M
2	Nut	1	304;316
3	Disc Washer	1	304;316
4	Disc	1	Teflon,Viton
5	Disc Bonnet	1	316;CF8M
6	Spring	1	304;316
7	Gasket	1	Teflon
8	Cap	1	316;CF8M

尺寸圖 DIMENSION LIST

K8 (600psi)

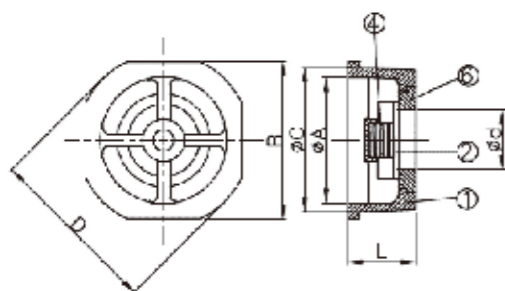
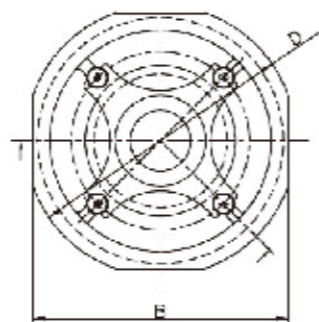
VALVE SIZE	1/4"	3/8"	1/2"	3/4"	1"	1-1/4"	1-1/2"	2"	2-1/2"	3"
L m/m	56.5	56.5	60.0	69.0	84.5	98.5	109.5	135.5	170.0	195.0
H m/m	35.0	35.0	38.5	43.5	51.5	60.5	70.0	86.0	110.0	130.0
ød m/m	11.0	14.0	18.0	23.0	29.0	37.0	43.5	55.0	67.5	83.0
WEIGHT(KG)	0.17	0.14	0.22	0.34	0.53	0.82	1.12	1.91	3.60	5.00

* 我方有權隨時變更材質/設計/規格，以便提供品質優良的產品。

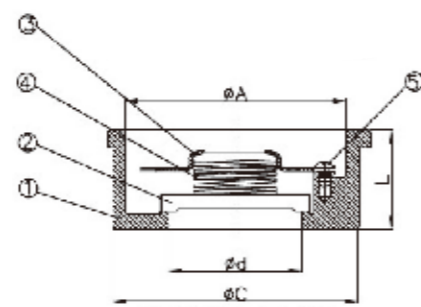
We reserve the right to modify the design / specification without previous notice for better quality.

物料表 MATERIAL COMPOSITION

型號 Fig. No. : K9



尺寸 DN15 ~ DN50



尺寸 DN65 ~ DN100

ITEM	PART NAME	MATERIAL
1	Body	1.4408
2	Disc	ANSI 316
3	Cap	ANSI 316
4	Spring	ANSI 316
5	Screw	ANSI 316
6	Insert	ANSI 316

尺寸圖 DIMENSION LIST

K9 (PN40)

DN	inch	Ød	ØA	B	ØC	D	L
15	1/2"	15	34	45	41	53	16
20	3/4"	20	37	55	46	63	19
25	1"	25	46	65	56	73	22
32	1-1/4"	32	63	79	74	84	28
40	1-1/2"	38	76	89	86	94	31.5
50	2"	50	83	99	96	107	40
65	2-1/2"	62	103	118	115	126	46
80	3"	76.5	117	134	131	144	50
100	4"	96	132	154	150	164	60

* 我方有權隨時變更材質/設計/規格，以便提供品質優良的產品。

We reserve the right to modify the design / specification without previous notice for better quality.